

# Stockyard Hill Wind Farm

## Newsletter

Edition 4: October 2009



Together we can  
make a difference.™

Welcome to the fourth edition of the Stockyard Hill newsletter. This newsletter provides information to the communities involved in the Stockyard Hill Wind Farm development, situated between Sipton and Beaufort, 35 km west of Ballarat. More copies are available by either contacting us, or downloading from our website.

## *Origin acquires Wind Power*

Many people have heard about Origin becoming involved with the Stockyard Hill Wind Farm and what this means for the project.

In May 2009, Origin Energy announced the acquisition of Wind Power Pty Ltd and all of Wind Power's high quality wind farm development sites in Victoria, including the proposed Stockyard Hill Wind Farm.

The Wind Power acquisition builds on the extensive renewable energy positions already held by Origin across Australia and New Zealand including investments in wind, hydro, geothermal and solar technologies.

Origin has been active in the wind sector since early this decade when Australia's first commercial wind farm was opened at Codrington in Victoria – with the offtake fully contracted to Origin. Origin now holds more than 2,000 MW of wind farm development options including a pipeline of 1,520 MW owned by the Company.

Origin's first self-built wind farm – the Cullerin Range Wind Farm in New South Wales – became fully operational and began producing renewable energy in August this year. This 30 MW wind farm is now making an important contribution to increasing the supply of renewable electricity generation in NSW and is doing its part to help lower the State's greenhouse gas emissions.

The Cullerin Range Wind Farm and the acquisition of Wind Power and its wind projects will all assist Origin in meeting its obligations under the Federal Government's Renewable Energy Target. It will also support customer demand for GreenPower™ as Origin is Australia's number one green energy provider.

With an estimated capacity factor of around 40 per cent, Stockyard Hill Wind Farm is poised to become one of the most competitive projects of its kind in Australia. Origin is pleased to be involved in such a significant project and we look forward to actively consulting with the community in the coming months.

Cullerin Range  
Wind Farm,  
NSW

## *Contact us*

Origin –  
Major Development Projects  
(Melbourne)

Level 3, 765 Glenferrie Road  
Hawthorn VIC 3122

Phone: 03 9652 5200

Fax: 03 9819 0120

Email: [StockyardHillWindFarm@originenergy.com.au](mailto:StockyardHillWindFarm@originenergy.com.au)



## Where are we at?

### Status of the Planning Application

The planning application for the Stockyard Hill Wind Farm is under review by the Department of Planning, Community and Development. The planning application is the result of a substantial amount of work carried out by a wide range of technical experts. These experts have undertaken extensive research and studies to make sure that we are aware of all potential impacts that the proposed Stockyard Hill Wind Farm may have on the environment and the broader community. These studies take a long time to complete but they are essential to help us design a wind farm with as little negative impact as possible and that any risks are properly managed.

Throughout the development of the proposed Stockyard Hill Wind Farm, we have engaged experts to look at topics such as:

- Planning
- Groundwater and surface water
- Geology, geomorphology & geoscience values
- Geotechnical review
- Flora & fauna
- Modelled risk of broлга collisions (turbines)
- Evaluating risk of broлга collisions with powerlines
- Predicting impacts on broлга population
- Cultural heritage
- Traffic management
- Broadcasting & radio communications impacts
- Shadow flicker
- Aircraft safety
- Obstacle marking & lighting
- Noise
- Socio-economic impact
- Landscape & visual

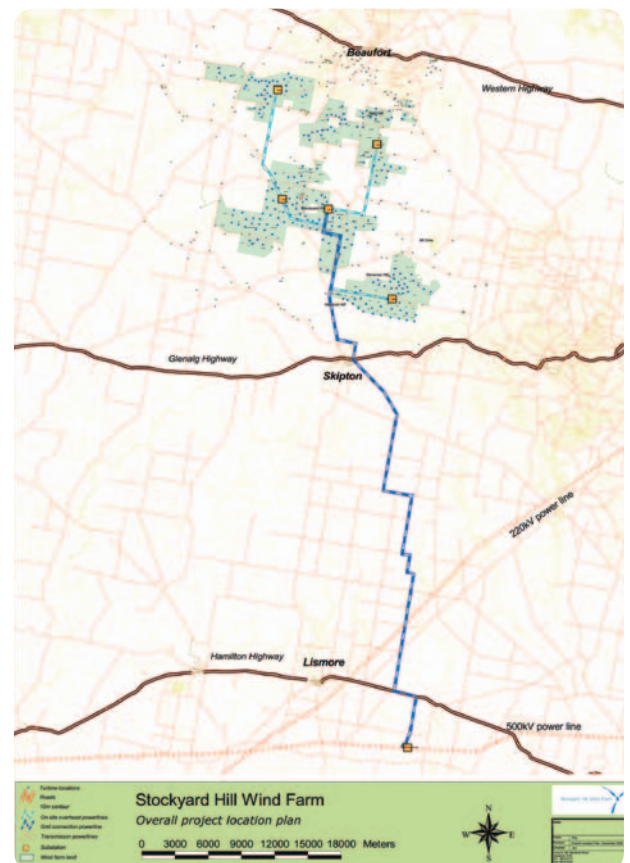
We expect to publicly advertise the planning application and all reports for this project towards the end of 2009. In the meantime we have released key details about the proposed wind farm and we want to hear your views on the project so far. Any information you give us will be considered and will help us with our plans for the Stockyard Hill Wind Farm. Please call us on 03 9652 5200 or email: [StockyardHillWindFarm@originenergy.com.au](mailto:StockyardHillWindFarm@originenergy.com.au)

## Power Line and Connection

The proposed power line is intended to connect the Stockyard Hill Wind Farm to the electricity grid via the 500 kV transmission line near Lismore. This will involve 59 km of power lines primarily on road reserves. The power lines will be single poles, up to 18.5 m high and constructed from either concrete or wood. There will be 6 or 7 wires on each pole.

A terminal station will be built to feed electricity generated by the wind farm to the national electricity grid.

We have lodged separate planning applications with the Corangamite Shire Council for the construction of the terminal station and the removal of native vegetation required to construct the power line. At the Council meeting held on 22 September 2009, the Corangamite Shire Council voted to request the Minister for Planning to 'call in' these planning applications so that all Stockyard Hill Wind Farm related applications can be considered at the same time.



## More information

If you would like to know more about the proposed wind farm, the power line route, the planning process or general information about wind energy, you can visit [www.wind-power.com.au](http://www.wind-power.com.au). You can also call our office on **03 9652 5200** and speak to one of our staff.